



UF540

Power MOSFET

27A, 100V N-CHANNEL POWER MOSFET

■ DESCRIPTION

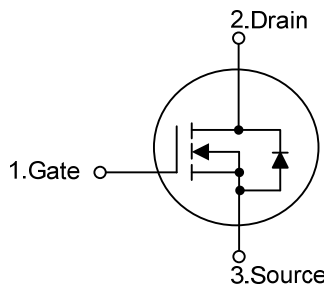
The UTC **UF540** is a N-channel enhancement mode power MOSFET using UTC's advanced technology to provide the customers with a minimum on-state resistance and high switching speed.

The UTC **UF540** is suitable for AC&DC motor controls and switching power supply, etc

■ FEATURES

- * $R_{DS(on)} < 85m\Omega @ V_{GS} = 10V, I_D = 15A$
- * High Switching Speed

■ SYMBOL



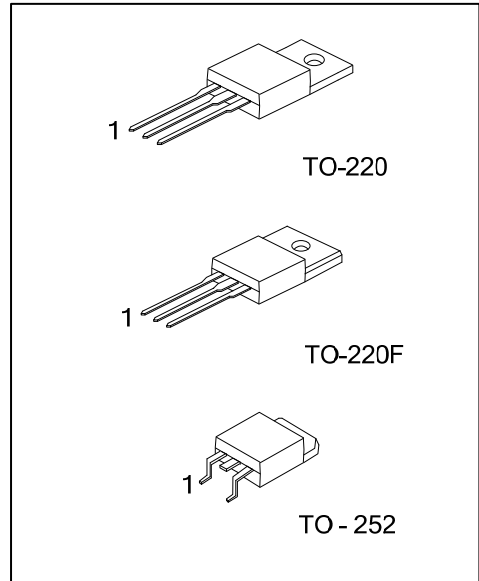
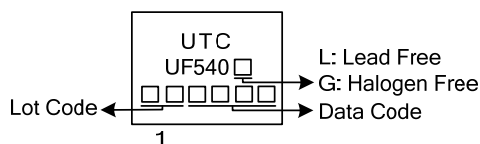
■ ORDERING INFORMATION

Ordering Number		Package	Pin Assignment			Packing
Lead Free	Halogen Free		1	2	3	
UF540L-TA3-T	UF540G-TA3-T	TO-220	G	D	S	Tube
UF540L-TF3-T	UF540G-TF3-T	TO-220F	G	D	S	Tube
UF540L-TN3-R	UF540G-TN3-R	TO-252	G	D	S	Tape Reel

Note: Pin Assignment: G: Gate D: Drain S: Source

<p>UF540G-TA3-T</p>	<p>(1) T: Tube, R: Tape Reel</p> <p>(2) TA3: TO-220, TF3: TO-220F, TN3: TO-252</p> <p>(3) G: Halogen Free and Lead Free, L: Lead Free</p>
---------------------	---

■ MARKING



■ ABSOLUTE MAXIMUM RATINGS

PARAMETER		SYMBOL	RATINGS	UNIT	
Drain-Source Voltage (Note 2)		V_{DSS}	100	V	
Gate-Source Voltage		V_{GSS}	± 20	V	
Drain Current	Continuous	I_D	$T_C=25^\circ\text{C}$	27	A
			$T_C=100^\circ\text{C}$	17	A
	Pulsed	I_{DM}	108	A	
Power Dissipation ($T_C=25^\circ\text{C}$)	TO-220	P_D	125	W	
	TO-220F		50	W	
	TO-252		83	W	
Junction Temperature		T_J	+150	$^\circ\text{C}$	
Storage Temperature		T_{STG}	-55 ~ +150	$^\circ\text{C}$	

Notes: 1. Absolute maximum ratings are those values beyond which the device could be permanently damaged.

Absolute maximum ratings are stress ratings only and functional device operation is not implied.

2. $T_J = +25\sim+150^\circ\text{C}$

■ THERMAL DATA

PARAMETER		SYMBOL	RATINGS	UNIT
Junction to Case	TO-220	θ_{JC}	1.0	$^\circ\text{C/W}$
	TO-220F		2.46	$^\circ\text{C/W}$
	TO-252		1.5	$^\circ\text{C/W}$

■ ELECTRICAL CHARACTERISTICS ($T_C=25^\circ\text{C}$, unless otherwise noted)

PARAMETER		SYMBOL	TEST CONDITIONS	MIN	TYP	MAX	UNIT
OFF CHARACTERISTICS							
Drain-Source Breakdown Voltage		BV_{DSS}	$I_D=250\mu\text{A}, V_{GS}=0\text{V}$	100			V
Drain-Source Leakage Current		I_{DSS}	$V_{DS}=100\text{V}, V_{GS}=0\text{V}$			250	μA
Gate-Source Leakage Current	Forward	I_{GSS}	$V_{GS}=+20\text{V}, V_{DS}=0\text{V}$			+500	nA
	Reverse		$V_{GS}=-20\text{V}, V_{DS}=0\text{V}$			-500	nA
ON CHARACTERISTICS							
Gate Threshold Voltage		$V_{GS(TH)}$	$V_{DS}=V_{GS}, I_D=250\mu\text{A}$	2.0		4.0	V
Static Drain-Source On-State Resistance		$R_{DS(ON)}$	$V_{GS}=10\text{V}, I_D=15\text{A}$			85	m Ω
DYNAMIC PARAMETERS							
Input Capacitance		C_{ISS}	$V_{GS}=0\text{V}, V_{DS}=25\text{V}, f=1.0\text{MHz}$		1680		pF
Output Capacitance		C_{OSS}			250		pF
Reverse Transfer Capacitance		C_{RSS}			40		pF
SWITCHING PARAMETERS							
Total Gate Charge		Q_G	$V_{DD}=80\text{V}, I_D=16\text{A}, V_{GS}=10\text{V},$		100		nC
Gate to Source Charge		Q_{GS}			12		nC
Gate to Drain Charge		Q_{GD}			30		nC
Turn-ON Delay Time		$t_{D(ON)}$	$V_{DD}=30\text{V}, I_D=0.5\text{A}, V_{GS}=10\text{V},$ $R_{GEN}=25\Omega$ (Fig.1, 2) (Note 2)		90		ns
Rise Time		t_R			120		ns
Turn-OFF Delay Time		$t_{D(OFF)}$			300		ns
Fall-Time		t_F			145		ns
SOURCE- DRAIN DIODE RATINGS AND CHARACTERISTICS							
Maximum Body-Diode Continuous Current		I_S				27	A
Maximum Body-Diode Pulsed Current		I_{SM}				108	A
Drain-Source Diode Forward Voltage		V_{SD}	$I_S=27\text{A}, V_{GS}=0\text{V}$		2.0	2.5	V
Body Diode Reverse Recovery Time		t_r	$I_S=4.0\text{A}, dI_S/dt=25\text{A}/\mu\text{s}$		300		ns

Notes: 1. Repetitive Rating: Pulse width limited by maximum junction temperature.

2. Switching time measurements performed on LEM TR-58 Test equipment.

■ TEST CIRCUITS AND WAVEFORMS

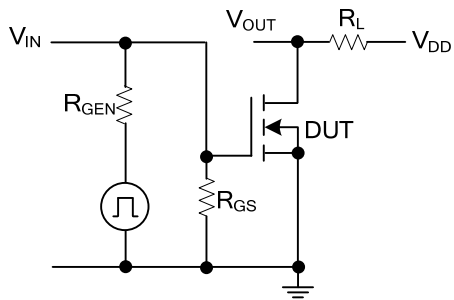


Fig.1 Switching Test Circuit

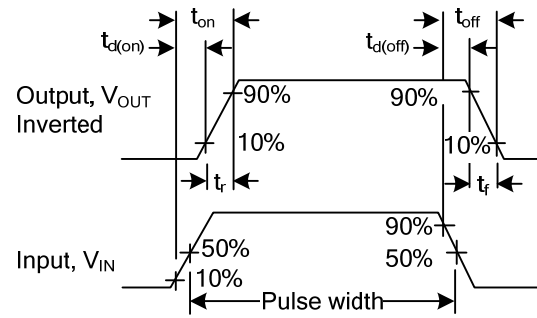
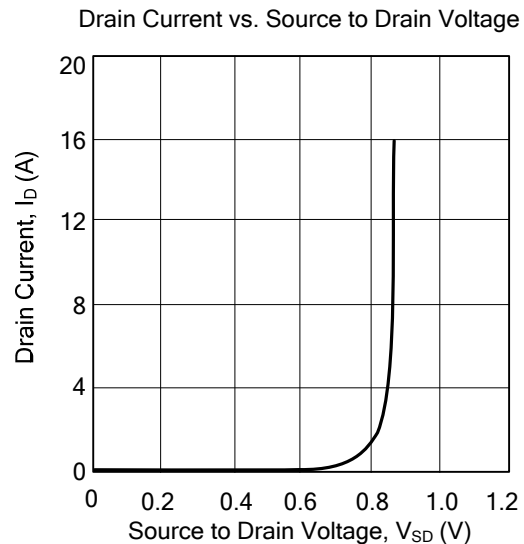
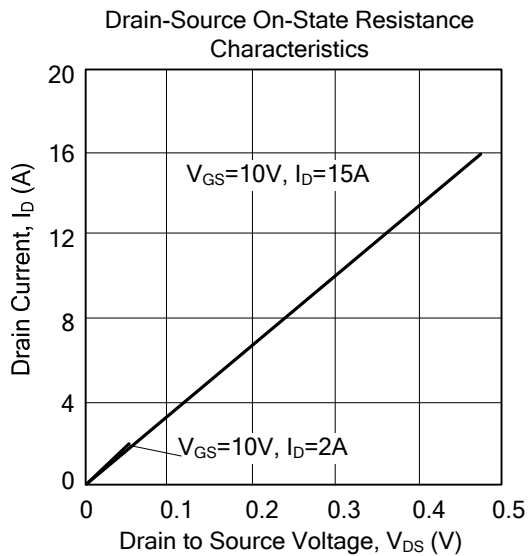
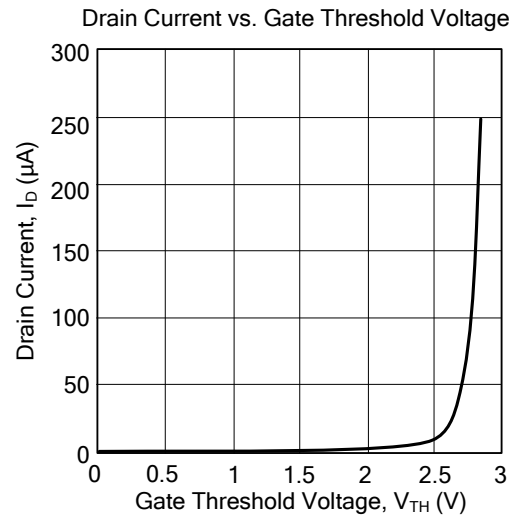
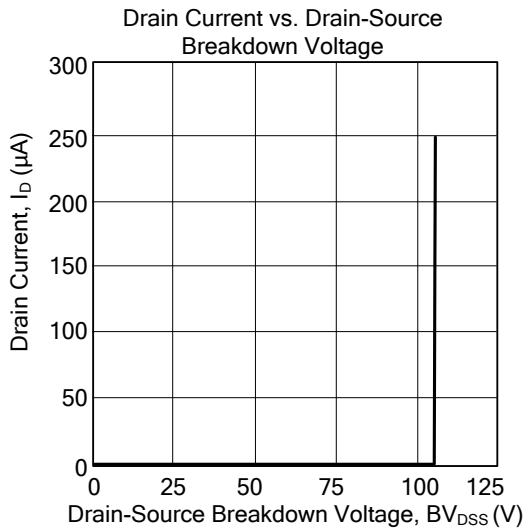


Fig.2 Switching Waveforms

TYPICAL CHARACTERISTICS



UTC assumes no responsibility for equipment failures that result from using products at values that exceed, even momentarily, rated values (such as maximum ratings, operating condition ranges, or other parameters) listed in products specifications of any and all UTC products described or contained herein. UTC products are not designed for use in life support appliances, devices or systems where malfunction of these products can be reasonably expected to result in personal injury. Reproduction in whole or in part is prohibited without the prior written consent of the copyright owner. The information presented in this document does not form part of any quotation or contract, is believed to be accurate and reliable and may be changed without notice.